



Trout Tales

Rocky River Chapter

Trout Unlimited



August 2012

PRESIDENT'S MESSAGE

Hello members and friends!

We are happy to announce the addition of three schools to our Trout in the Classroom (TIC) program. They are Cannon School of Concord, Community School of Davidson and Quail Hollow Middle School; these new schools bring our current total to seven schools. The NCTU state council recently named Don Davidson as our state coordinator for the TIC program.

Patrick Cooney, a doctoral candidate at North Carolina State University, is our \$1000 NCWF scholarship winner. Mr. Cooney's research goal is to define the extent and causes of stocked trout migration and mortality. He received a lifetime achievement award from the Student Fisheries Society at NCSU in 2011 and is the current president of that organization. Congratulations Mr. Cooney!

We have a number of volunteer opportunities coming soon. Davidson Lands Conservancy has invited us to participate in their Green Day Festival on September 15. And South Mountains State Park sent us an invitation to participate in their Nature Day on September 29. If your calendar is open on those days and you would like to represent RRTU, please let me know.

At our September meeting we will elect officers and board members for the 2012-13 year. If you are interested in being an officer or board member for RRTU, please contact **Joyce Shepherd** or **Bill Thomas**. Joyce is leading our nomination committee. We have openings for officers and board members so do not be shy if this interests you!

Several RRTU members plan to attend the 2012 TU Annual Meeting in Asheville, NC. **Tom Adams, Jim Mabrey, Joyce Shepherd, Tim Wilhelm** and I will attend all or part of the event. We will report on our September trip for the October newsletter.

Our fall Appletree camping and fishing trip will be here soon. Dates are set for October 4-7 so please sign up soon as this will help with planning. The spring One Fly tournament was such a hit that we plan to run that again on Thursday, October 4. We also plan to raffle several items with all proceeds going to our TIC program. We are looking for a guest speaker to join us on Friday night, October 5. Look for more Appletree information in the September newsletter.

We have dates set for our winter fly tying program. And our "Night with Friends of Rocky River" is set for February 28, 2013 with guest speaker Mike "Squeak" Smith.

With the high temperatures and low water in Montana, the place to be this fall is the vicinity of the Henry's Fork in Idaho and Yellowstone Park. Do not forget we have access to a cabin on the Henry's Fork which might have dates available this September and October. Let me know if this is of interest.

Book of the month – *Fly Fishing Yellowstone National Park: An Insider's Guide to the 50 Best Places* by Nate Schweber

Website of the month -
<http://www.bristolbaylodges.com/>

See you at the August 16 meeting. Remember this is a good time to bring your ideas as we begin a new fiscal year on October 1 with new officers and board members.

Thank you!

- **Bill Thomas** (bill.thomas1999@gmail.com)

RRTU Calendar

Aug 16: RRTU meeting
Aug 22: How-to Where-to, Sharon Methodist Church

Sept 08: NCWF Awards Banquet, Cary, NC
Sept 12-16: TU Annual Meeting, Asheville, NC

Sept 15: Davidson Lands Conservancy Green Day
Sept 20: RRTU meeting (annual elections)
Sept 26: How-to Where-to, REI Northlake
Sept 29: South Mountains State Park Nature Day

Oct 04-07: Appletree fishing/camping trip
Oct 18: RRTU meeting
Oct 24: How-to Where-to, Sharon Methodist Church

Nov 10: Fly tying, REI Northlake
Nov 15: RRTU meeting
Nov 23 or 24: Streamside, Wilson Creek

December: no regular meeting or newsletter
Dec 08: Fly tying, REI Northlake

August 16th meeting

Alan Folger and Marvin Cash – Project Healing Waters

Covenant Presbyterian Church
1000 East Morehead Street
Room 207, Fellowship Hall
Charlotte, NC 28204

Social time: 6:30 PM
Meeting: 7:00 PM

Note: Some RRTU members meet for dinner before the meeting at the Dilworth Neighborhood Grille, 911 East Morehead Street, (704) 377-3808. Ask the hostess for the RRTU group; folks usually gather for dinner around 5:30 PM.

Friends of Rocky River (FORR)

The 2012 Friends of Rocky River (FORR) program campaign officially started in February. The campaign letter went out via electronic mail on February 23.

We hope that participation will grow as we move from year to year with the Friends of Rocky River program. Through the end of July we have raised over \$6,300 toward a 2012 goal of \$8,000.

And we want to publicly thank several individuals and organizations who have donated recently:

June –
Jim Mabrey, Casey Brock, Bank of America gift match (Joe Beckert, David McGinness), Duke Energy gift match (Alen Baker)

July –
Mildred English, Sue Hartsell, Alen Baker, Jim Brittain, Bank of America gift match (Jonathan Miller)

In order to donate, please make checks payable to **Rocky River Trout Unlimited** and mail your tax deductible donation to:

Jonathan Miller
2900 Winghaven Lane
Charlotte, NC 28210

Some employers may match employee donations to 501(c)(3) organizations. If your employer matches employee contributions, please include those forms with your donation.

Note that the 2012 FORR Campaign Letter has been added to the newsletter. The letter and the Pledge Card appear as the last page of the newsletter.

Thank you!
- **Steve Craig/Terry Hill**, FORR Committee

June 21, 2012 meeting

TJ Roy, manager of the Phillips Place Orvis store, talked about fishing the Catawba River tailwater below Lake James. The new Duke Energy powerhouse at the Bridgewater Dam was functional as of January, 2012. Maintaining a consistent flow of cold water from the bottom of Lake James should make a nice tailwater fishery within a two hour drive of Charlotte. Duke plans to maintain 150 cfs flow from the powerhouse with recreational flows (weekends) in the 350 cfs range. Access to the water is very limited; easiest way to fish is via boat. You may float down to the shoals and wade fish the shoals. The first mile below the dam is NC Hatchery Supported Trout Water. The water from Muddy Creek to the Morganton Water Intake is Special

Regulation Trout Waters. Contact Wilson Creek Outfitters for shuttle service or to schedule a Catawba River float trip.

Thanks to all who were able to attend the June meeting.

- Editor

Upcoming RRTU Meeting Topics/Presenters

August 16

Alan Folger and Marvin Cash, Project Healing Waters. Project Healing Waters is an international organization that supports the emotional and physical rehabilitation of disabled veterans and active duty military through fly fishing and related activities.

Alan Folger is TU's Veteran Services Program Coordinator. He travels the United States facilitating TU's outreach to veteran groups. He plays a critical role in starting new PHW chapters throughout the country. Marvin Cash coordinates the PHW program in the Charlotte area.

September 20

Annual meeting. Election of 2012-13 officers and board.

October 18

TBD.

Other Activities and Events

--Fly Tying--

Back by popular demand beginning in November ... this information from Jack McNeary:

Fall is rapidly approaching. Wouldn't it be nice to be able to tie most if not all of the flies you use. This will be the fourth year that RRTU has sponsored a fly tying class. Our class is designed to take tiers at all levels of skill from the beginner to the advanced.

This year we will also bring in one or more experienced tiers from outside our area to share his or her knowledge with us.

And at \$10 for all five sessions this is a REAL bargain. We meet at REI's facility at 9755 Northlake Centre Parkway. Dates are November 10, December 8, January 12, February 16 and March 16.

We will give you more details as we get closer to November.

- Davidson Lands Conservancy Green Day Festival -

This year's Green Day is set for Saturday, September 15 from 08:00 am until 12:00 pm on the Davidson Village Green (Main Street and Concord Road).

www.davidsonlands.org

-- SMSP Annual Nature Day --

South Mountains State Park will hold their 10th Annual Nature Day on Saturday, September 29 from 11:00 am until 04:00 pm.

www.ncparks.gov/visit/parks/somo/main.php

Appletree Fall 2012 Trip

The fall Appletree trip dates are October 4 – 7 on site A (25 person maximum) of the Appletree Group Campground. Fall trip fees are:

\$50 for Thursday, Friday and Saturday nights

\$40 for Friday and Saturday nights

These fees cover camping, most meals and all the fishing and fellowship you can squeeze into four days. Don't forget a new "feature" of our Appletree trips ... the Thursday one-fly tournament. You could walk away with the trophy ... just use ONE fly for all your Thursday fishing and keep a count of the number of fish caught. High fish count wins ...

Make your payment via PayPal (see our web site for a PayPal link – www.rockyrivertu.org). If you are using PayPal, please note the purpose of the payment (Appletree), the number of nights and the number of guests. If you prefer to pay by check, make the check payable to Rocky River TU and mail your payment to:

Jonathan Miller
2900 Winghaven Ln

Charlotte, NC 28210

Appletree information is also now available on our web site -

<http://www.rockyrivertu.org/appletree.asp>

- **Jim Mabrey**

Streamside Program 2012

As we start a new year with RRTU, we are also going to try to refresh our streamside programs. This year **Tom Adams, John Oliver, Tim Ramsey** and I will be hosting 3-4 streamside fishing Saturdays.

Thus far in 2012 we have hosted two events:

March 17 – North Mills River

May 5 – Mitchell River

If you missed the March and May events, do not despair. We plan to have at least one more streamside event in 2012. Stay tuned for more information about the next streamside.

For those of you that are interested or want more information on the RRTU 2012 streamside program, please send an e-mail to NCTroutScout@gmail.com.

- **David Hollifield**

Rivercourse – June 17-22, 2012

During the third week of June every year, the North Carolina State Council of Trout Unlimited sponsors the N.C.T.U. Rivercourse: Coldwater Conservation and Fly Fishing Youth Camp. Sixteen to eighteen young people between the ages of 13 and 15 come together to learn the ethics of coldwater conservation. Through the use of both traditional and natural classrooms, the campers receive instruction by volunteer experts in specialties such as geology, entomology, herpetology, stream restoration techniques, wetlands ecology, and environmental policy. Rocky River TU has been a long

time supporter and sponsor of Rivercourse. The camp is located on the pristine habitat of the West Fork of the Pigeon River in the mountainous region of Haywood County, North Carolina..

The kids arrive on Sunday to orientation which usually consists of getting geared up, taking some casting lessons and learning the importance of courtesy on the water and water safety. Later in the evening they stock the river with beautiful rainbow trout. The trout are supplied by Lake Logan and are donated to Rivercourse by the Pisgah Chapter of Trout Unlimited.

Most days begin with half of the campers in the water by 6:30 AM fishing and the other half tying flies. After breakfast, all who tied, fish and all who fished, tie. The week consists of turning over rocks to see what lurks on the bottom of the river for the fish to eat, shocking the river to see what kinds of fish are actually in the river (usually rainbow trout, brown trout, bluegill and bass). We have one day learning the importance of and rebuilding the riparian buffers in the Pisgah forest. It is a good lesson for them to learn so they can understand the damage that is done to a river just by fishermen (and others) walking along a river bank.

In addition, the fly-fishing and fly tying instruction reinforces traditional values of patience, technique, attention to detail and a general love of the outdoors.

If you know a young person between at the ages of 13 to 15, please encourage them to apply at the Rivercourse web site:

<http://rivercourse.org/> .

If you would like to make a tax deductible contribution to Rivercourse, please make your check payable to:

NCTU Rivercourse
P.O. Box 203
Tryon, NC 28782

Please specify if you would like your donation to go towards camp operations or to the Rivercourse Fund.

Here are some pictures from Rivercourse 2012:



- Joyce Shepherd

TU – National News @ tu.org

Looking for information on legislation? How about recent press releases? Searching for the TU president's message in the TU newsletter? Interested in member benefits? You will find all of these ... and much more at www.tu.org

- 2012 TU Annual Meeting -

You will NOT have to travel far for the 2012 TU Annual Meeting though you will still have to “go west.” More precisely ... northwest to our very own Asheville! Watch for news on this event and mark your calendar for September 14-16, 2012.

<http://www.tu.org/events/2012-annual-meeting>

Several RRTU officers and board members will attend this event. We will report on their trip in the October newsletter.

- Other “stuff” -

(1) In the News (see website): Small farms looking to Salmon Safe label to market crops ([wenatcheeworld.com](http://www.wenatcheeworld.com)), Windy Gap remains a controversial topic ([denverpost.com](http://www.denverpost.com)), Transition for Tongass ([americanforests.org](http://www.americanforests.org)), US Fish & Wildlife Service to end effort to restore Atlantic salmon to the Connecticut River ([therepublic.com](http://www.therepublic.com)).

(2) TU in Action (see website): Salmon Safe: good for farmers, good for fish; Native Trout Grants Available to

TU Chapters; Crooked River; the power of collaboration; Big victory for Oneida Narrows fishery; Alaska's Tongass National Forest Shifts From Timber to Salmon.

3) Got a question? That question may already be answered in the Ask Trout Unlimited section located here: <http://www.tu.org/about-us/ask-trout-unlimited>

- **Trout** magazine -

Lost your recent issue? Trying to find an old article? You will find current and archive issues of *Trout* on the TU web site in the Press Room tab:

<http://www.tu.org/press-room/trout-magazine>

- **On the Rise** -

The Sportsman Channel will host this year's fourth season of Trout Unlimited's television program *On the Rise*.

Show 7 will highlight Asheville, NC and a sub-species of brook trout. Show times (all times Eastern) are:

Tuesday at 03:00 AM

Thursday at 06:30 AM

Friday at 04:30 PM

Saturday at 02:00 PM

<http://www.thesportsmanchannel.com/>

<http://www.tu.org/press-room/on-the-rise>

- **August Lines to Leaders** -

Several items of note in the August version:

- (1) 2012 Women's Fly Fishing Retreat.
- (2) TU Teen Summit in Pennsylvania.
- (3) Stream Clean-up Days Winners Announced.

- **Editor**

How-to Where-to Sessions

The Rocky River Chapter of Trout Unlimited

(RRTU) Presents...How-To-Where-To Sessions

Each month except during the Fly Tying Sessions from November thru March, members and guests of RRTU are invited for an informal, knowledge sharing session (simply a whiteboard, handouts and interactive conversation) about how to fly fish and/or where to fly

fish. Topics and which gathering location will be published well in advance in both the chapter newsletter and on www.rockyriver.org.

How-To-Where-To Session Goals:

- Reach out to those interested in water conservation and fly fishing
- Help share knowledge among beginners and veteran fly fisherman (you do not have to be a TU member)
- Create an interactive, participatory, low-key and friendly gathering of like minds.

Schedule – 4th Wednesday at 6:30 pm each Month listed below

April How-To-Where-To Session at Sharon Methodist Church (South Park)

Fly Fishing with Dry Flies

Fly Fishing Delayed Harvest Streams

(Note: No April session in 2012)

May How-To-Where-To Session at REI (North Lake, Huntersville)

23rd Fly Fishing with Terrestrials

Fly Fishing Wild and Catch-and-Release Streams

June How-To-Where-To Session at Sharon Methodist Church (South Park). Room A-13, 15.

27th Fly Fishing with Streamers

Fly Fishing Remote Headwaters - Cool Places during the Dog Days of Summer

July How-To-Where-To Session at REI (North Lake, Huntersville)

25th Fly Fishing with Wet Flies

Fly Fishing Stillwater

August How-To-Where-To Session at Sharon Methodist Church (South Park). Room A-9.

22nd Fly Fishing with Small Flies, Size 18 and Smaller

Fly Fishing Wild and Catch-and-Release Streams

September How-To-Where-To Session at REI (North Lake, Huntersville)

26th Fly Fishing with Dry Flies
Fly Fishing Delayed Harvest Streams

October How-To-Where-To Session at Sharon Methodist Church (South Park). Room A-9.

24th Fly Fishing with Nymphs
Fly Fishing Tailraces

Note: Each session will be roughly 1 ½-2 hours long with 20-30 minutes on how-to, 30-40 minutes on where-to and 20-30 minutes on **Tips and Dealing with Unusual Conditions** every session. The group at a given session can decide together to spend more or less time on a given topic.

Session Leaders: Tom Adams and Alen Baker (we encourage other RRTU members to become session leaders with us)

Direction to REI (North Lake, Huntersville): Take I-77 North to Exit 18, Harris Blvd. west. Turn right at the stoplight that takes you to the shopping area with **Target**. REI is on the corner, very visible with parking in front and to the side. The meeting room is in the back left corner from the entrance.

Directions to Sharon United Methodist Church (South Park): The church is across the street from the Cheesecake Factory side of the mall on Sharon Road. Park in the church parking lot and ... watch for the RRTU signs.

- **Tom Adams/Alen Baker**

Tales from the Stream

Editor's note: We are always excited to hear from RRTU membership about their fishing adventures. This one comes from member **Alen Baker** regarding some July wet weather fishing ... THANKS Alen!

A Wild Morning

Bill Ritter and I headed out an early July morning to a 4WD accessible, wild, remote headwaters stream just after the heat wave began to subside. Everything seemed perfect. It was much cooler, overcast and the stream was clear without

run-off effects whatsoever and 63 degrees. The low-water from the heat wave would be a challenge but the fish had likely not seen an angler in a while so we thought we had an edge. The stream tends to produce wild brown trout in the lower reaches and turns to brook trout above the cascades, so we were prepared for the challenges of tough to catch wild brown trout for a while. As soon as we had our gear on and were ready to head from the SUV to the water we were discussing the need for rain gear. Well, just as the conversation began, so did a huge downpour. Memo to self - do not mention rain on a perfectly overcast day...so we fished for the next several hours in the downpour. Surprisingly, all the fish caught were brook as the brown for whatever reason were lower down stream than usual. We totaled 12 before we threw in the "wet" towel. I learned just how difficult it is to know the difference when a raindrop sinks your dry fly and when a trout takes it...in both cases you simply set the hook and hope! All I can tell you, it was yet another day in paradise!

- **Alen Baker**

Tip of the Month

Many years ago a number of RRTU chapter members supplied tips for the newsletter. We are bringing some of those tips out of retirement and hope you find these useful.

Tips for the Fisherman

Should you walk through bush with the rod tip behind you or forward in front of you? When the rod tip trails, often the line will get caught on a branch; keeping the rod tip forward allows for a watchful eye in preventing this. Mark your trail with biodegradable tissue paper or broken limbs to prevent blazing return trails and risking that rod tip even more. Tie a bell or something that will easily make a noise on the top to help remind you to watch.

- **Alen Baker**

Fly of the Month

This "fly of the month" represents the latest in the **Alen Baker/Tom Adams** series.

It is hot. The streams are beginning to get low and very clear. There are no hatches to be found. To find trout in

North Carolina that will respond to these extremes you are either fly fishing remote, highly canopied headwaters where it's cooler or you are on a larger stream looking for the deeper waters along an undercut bank that is overgrown with vegetation. So what fly do you pull out of the fly box that will most likely attract a trout from the only comfortable place it can find.

Grasshopper

The Grasshopper is fished as a dry fly, but not in a traditional sense. Foremost a grasshopper is a larger, bulky fly that defies a delicate presentation. However, as an exception to dry fly fishing, you really want your presentation to make a good, noisy splash just as a natural grasshopper would do as it falls into a stream. This would normally spook a trout in the spring or fall, but during the hot days of summer, a trout is typically hiding or feeding along the bottom or just into the shade along an overgrown or overhanging bank. In either case, the splash can invoke the attention of the trout.

The larger, bulky Grasshopper will also not float very long before it begins to slowly sink. Normally, when a dry fly begins to sink, it is immediately time to re-apply floatant to make sure you have a long, high drift on the surface. However as yet another exception to dry fly fishing, you really want your presentation to gradually sink just as a natural grasshopper would do as it drifts downstream. Trout will take a Grasshopper on the surface as well as in the upper water column depending on how long the trout takes to follow and move over into a position for the take. Once the Grasshopper fails to initially float on the surface, you should re-apply floatant to assure some surface drift, and then work through a few passes again.

The Grasshopper may be tied in a number of sizes, styles and colors. Sizes used on trout streams range from size 14 down to size 6. The styles vary from somewhat simple attractor patterns to very elaborate, almost realistic patterns. Watching Dave Whitlock tie his world famous Dave's Hopper fly will give you a whole new meaning to fly tying. I had to practice to be able to tie a Dave's Hopper in less than 30 minutes. But one must consider that the fly is so highly effective that you need a few in the fly box even if you have to purchase them.

Grasshopper patterns on the market are typically unique in style and sold simply by size with a few patterns that may come in an alternate color. For example, Dave's Hopper, Joe's Hopper and a few other patterns is tied with a yellow body or a green body. Sometimes the green body can also represent a katydid as there are only a few Katydid patterns. A black or brown pattern is typically a Cricket as there are a good number of patterns that parallel specific hopper styles such as the Letort Hopper and the Letort Cricket. Over the years I have purchased many different hopper patterns and have literally collected the various styles. I have three full boxes, each with 18 slots and each slot with a different hopper pattern. I am sure there are many more I have not encountered.

To fish the Grasshopper, use a larger 2X-4X tippet size to better match the Grasshopper size. I use fluorocarbon which is more transparent in water than mono such that a larger size is less noticeable. Cast upstream and across for a drift much in the same manner as fly fishing a traditional dry fly. The larger, bulky Grasshopper will take some adjustment in the pause time on the back cast as it drops quickly. The Grasshopper is presented in the same manner as a dry fly except the shear weight of the fly will plop the surface with a good splash that demands the attention of any trout nearby. Drift the hopper down each feeding seam as well as very, very close to the stream bank, literally under the overgrowth if possible. Let the hopper sink for a few feet further downstream just in case a trout is following or even waiting for the hopper to get close for the take.

My most memorable experience using a Grasshopper is a day in Yellowstone Park on Gibbon River in 1988. The Gibbon River is a fast flowing, freestone stream down to Gibbon Falls, then the stream meanders through Gibbon Meadows until it flows into Firehole River. The stream through the meadow flows through overhanging wild grass on both sides, ideal hopper country throughout. My first cast that did not hang up in the grass drifted only a few seconds before a huge fifteen inch brown chomped my Yellowstone Hopper and headed down stream like a freight train. I recall catching the most browns ever in a single day on several different hopper patterns.

This is a fly for the dog days of summer in North Carolina.

- Alen

Hopper Juan Fly of the Month 08.2012

HOOK: Streamer, 3X to 4X. Tiemco 5263 or equivalent. Size 4,6,**8,10**,12

Thread: UTC 140 in color to match

Body: 1.5mm Closed Cell Foam two colors of choice

Wing: Plain Web Wing material (MFC)

Note: There are numerous foam patterns available. This is a straightforward yet handsome grasshopper imitation with great visibility, good support for droppers, durable and easy to tie. There are also other photo illustrations for classic variants of hopper patterns. They are time proven and quite honestly not a difficult tie. Try them all!

Directions:

1. Cut the two foam pieces to size for the hook of choice. You may cut the pieces with scissors or craft knife. Make sure if you cut them without a manufacturers cutter, you allow sufficient length. The foam should extend past the hook eye and the bend by one hook gape for each position. Rounding the front is not necessary and I trimmed the tails after tying in everything else. In use, for the patterns shown, are MFC Hopper/Stonefly cutters. These are available from most fly shops and come as a set or individual based on hook size. Closed cell color foam is available in fly shops or craft stores. The fly shops will have the best assortment of the correct colors, but either will do. Vary color patterns to suit the time of year and location where you are fishing.
2. Choose the bottom color of foam and skewer with the hook point allowing a segment to protrude beyond the hook bend. There will be sufficient length to extend beyond the hook eye. Slide the skewered foam into position such that it is under the hook shank. Rotate the foam out of the way and wrap the tying thread on,

beginning two eyelengths from the hook eye. Spin the thread counter clockwise, flattening the thread and wrap in, in tight, overlapping wraps to above the hook barb. Let the bobbin hang.

3. Return the foam, laterally along the hook shank and after aligning take the bobbin and make the first wrap to bind the foam to the hook. Apply the thread in a very vertical and perpendicular (to the hook shank) wraps, fashion and secure with no more than three turns, one on top of the other. Let the bobbin hang.
4. Select the other piece of foam and match the tail ends. Holding the two pieces with your left hand, wrap the thread in the exact place as the bottom section. Once your are happy with the position make two more, tight wraps maintaining that single line of thread, and secure the top to the bottom.
5. Advance the thread to the next bottom segment (pushing the top foam section out of the way) location. The distance of the segment should be the next third of the hook shank. Wrap one or two soft wraps to assure you like the position, then no more than two firm wraps to secure. You will notice that a concave dimple has occurred between the two segments of the bottom. Place a small drop of CA (Zap-A-Gap style) cement in the dimple and place the upper section of foam in alignment and make one soft thread wrap for position and then two firm thread wraps to finish that segment.
6. Advance the thread to the next position, one third of the remaining space to the hook eye. Pull the bottom segment up to the bottom of the hook shank and make one or two soft wraps to verify that you like the position. Wrap tight with two turns and apply the cement.
7. Bring the top piece of foam down and secure with one or two soft wraps. When you are happy with the placement secure with two firm wraps. Advance the thread to half the distance to the eye hook and secure the bottom piece of foam. Before bringing down the top piece trim the bottom foam so that the eye is free.
8. Add the cement and bring the top foam down as you did above. There will be a section of foam protruding past the eye that remains untrimmed at this point. Bring the thread across the top of

the first segment (closest to the eye) with one movement making a forty five degree line across the top of the top piece of foam. Let the bobbin hang.

9. Cut the wing material in a similar manner to the body, but taper it slightly so that it is more narrow towards the eye. Tie in at the first segment (closest to the eye) using one light wrap for position and one firm wrap to secure. You do not want any build up of thread at this point. Make sure your wraps remain directly on top of one another. Let the bobbin hang.
10. Select four or five strands of sparkle and tie in with two wraps on top of the wing. These will trim slightly longer than the wing. Let the bobbin hang.
11. Select a portion of elk hair and after cutting, cleaning and stacking tie in on top so that the evenly matched tips are rearward and slightly longer than the length of the abdomen. When tying the hair wing in use the pinch method for placement and make two firm but not tight wraps. Using your left hand keep the hair on top and tight as a unit while you add two more turns of thread but with a lot more pressure than before. You want the wing to lift but not stand straight up. Trim the excess directly in front of the tie in. You will notice after securing the hair wing has shortened somewhat so that it does not protrude past the wing. Let the bobbin hang.
12. Use your right hand to bring the top piece of foam back to the hair wing and secure with two firm wraps. Trim the excess foam and let the bobbin hang.
13. At this point if you so choose you can add a bright or white piece of antron to act as an indicator. Just tie in a small piece with two wraps and trim to the height you prefer.
14. Choose two pieces of round rubber striped or unstriped legs. Place one at the tie point and make one soft wrap to hold it in place. Repeat on the other side and make two firm wraps to secure them.

Hopper Juan Green



Hopper Juan Red Orange



Hopper Juan Red Tan



Madam X Olive Hopper



Joe's Hopper



Madam X Hopper



Letort Hopper



- Tom Adams, Alen Baker

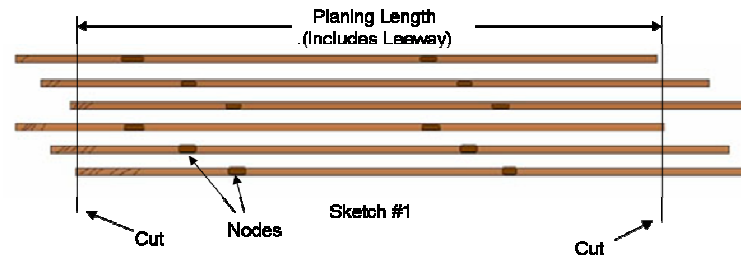
The Rod Project

It should be simple. The Sir D is a 7 foot rod so each section would be 3 ½ foot long (42 inches). A culm of bamboo is 12 foot long so cut it in half and let's get on with it.

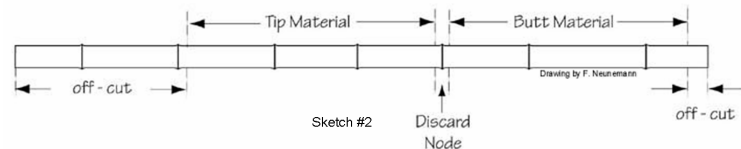
Well it's not that simple. If you have spent any time looking at bamboo you know that every so often there is a node and nodes aren't evenly spaced on a culm. They may be 10 to 12 inches apart at the butt or bottom end of the culm and 14 to 17 inches apart at the tip end. In a bundle of 20 culms, it is very possible that you won't find any 2 culms that have the same node spacing.

Nodes are weak spots and the rule of thumb is you don't want to have one within 5 inches of the tip or the ferrule. You also want to stagger them to prevent any two adjacent strips from having nodes at the same

location. There are a number of staggering options but the most common are 2 x 2 x 2 and 3 x 3. In a 2 x 2 x 2 stagger nodes are arranged so that two nodes are placed on strips on opposite sides of the rod then a couple inches away you'll have 2 more nodes and then the last 2 are beyond that. Sketch #1 should give you an idea of how that is done.



So staggering the nodes causes waste and a 2 x 2 x 2 that has the nodes spaced at 3 inches means you have to start with strips that are 6 inches longer than what you need. But that's not all you need a little bit of excess at either end to give you something to hang on to and to allow for areas. Our 42 inch strip is now 50 inches with the addition of 6 inches for node spacing and 2 extra inches (leeway) as insurance so we need to find a culm that will work the best when cut like the culm as shown in Sketch #2.



It really is a case of measure twice, cut once at this point but by starting with a 2 x 2 x 2 spacing you can switch to 3 x 3 if your strips are too short if you find yourself with strips that are too short.

- Tim Wilhelm

2012 Officer and Board Challenge

A member of our board, **David Hollifield**, recently challenged the RRTU officers and board. David's proposal was this:

- Catch at least one trout per month in 2012.
- “Catch” means in the net. The Jim Casada “temporary connection with another life form” does not count; some refer to this temporary connection as the “long distance release.”
- The penalty for not catching at least one trout per month - a \$10 Rivercourse donation for that month.

This challenge seems to offer a win on both sides of the coin ... either we are out fishing more than usual and (hopefully) catching more trout or we miss a month and support Rivercourse.

Please check here to see a chart which shows challenge results:

<http://rockyrivertrout.org/boardChallenge.asp>

If you would like to join us in this worthy pursuit, contact an officer or board member.

- Editor

RRTU on Facebook

How’s your social network doing? How about your fishing network? RRTU certainly wants to help with the second question. RRTU now has a Facebook page. Search for us on Facebook under Rocky River Trout Unlimited and sign up to join us. Also, please “like” the page as this will help us to be located more easily. You will be able to post and respond on this Facebook page. You can post pictures, invitations for fishing buddies or trip results, flies that work for you, etc. This page is for your use; we hope you use it often! RRTU on Facebook is a “closed” group meaning your name is public but your information is not.

- Jim Mabrey

Stream Water Flow Data

Ever wonder about the water flow in your favorite stream? How about after a big rain? The USGS has

monitoring on some NC streams. You may check on that data at this web site:

<http://waterdata.usgs.gov/nc/nwis/rt>

Hatch Charts

Familiar with any web sites which list hatch charts we could reference here in the newsletter? If so, please share. The flyfishingnc.com site has this chart:

<http://www.flyfishingnc.com/fly-bugs/patterns/fly-hatch-chart-north-carolina-smoky-mountains>

- Editor

The all electronic RRTU newsletter

The RRTU board made a decision to move to an electronic-only newsletter format starting in 2011. Our annual savings for the paper newsletter printing and postage costs is over \$3500; plus the newsletter has grown as there is no additional cost for more electronic pages. RRTU uses an electronic mail list server for sending the monthly newsletter. The instructions for requesting the monthly electronic newsletter follow.

Using the email account with which you wish to register, send an electronic mail message addressed to:

sympa@list.nctu.org

The subject line of this email should read:

Subscribe rrtu-news firstname lastname

Example: **Subscribe rrtu-news John Citizen**

RRTU Officers and Board Members

President: Bill Thomas – 704.231.7492

1st VP: Joyce Shepherd – 704.392.8499

2nd VP: Tom Adams – 704.877.3367

Secretary: Tim Wilhelm – 704.442.1253

Treasurer: Jonathan Miller – 704.552.0051

Paul Isaacs (2012) – 704.960.3649
Open TBA replacing Jonathan Miller (2012)
Alen Baker (2013) – 704.875.1505
David Hollifield (2013) – 704.938.8735

John Oliver (2014) – 704.467.1063
Tim Ramsey (2014) – 980.621.4562
Jim Mabrey (past president) – 704.786.034

February 2012

To: Members of Rocky River Trout Unlimited (#348)

Re: Friends of Rocky River (FORR)
2012 Fund Raising Campaign

We are pleased to advise that our 2011 campaign raised over \$5,500 or almost half of the funds required for our operations budget and chapter activities. Our goal for 2012 is \$8,000 which will constitute the majority of the funds needed to support our chapter activities.

Our purpose in establishing the FORR Program is to transition our primary fund raising initiative away from a banquet program format over to cash contributions. While we will continue to have selected raffles, auctions and companion trip opportunities throughout the year, we want our primary funding to emanate from cash donations from our members, friends, and business sponsors. Prize and trip donations to auction or raffle are likewise welcomed.

The funds raised in 2011 enabled us to support the following projects, activities, and programs:

Sponsored youth scholarship for the Rivercourse program
Trout in the Classroom
North Carolina Wildlife Federation Scholarship
Donated to TU Southeast Land Protection project
Winter fly tying program for all skill levels

Below is a pledge card for our 2012 drive. We are requesting this to be returned with your donation by May 1st. We appreciate your loyal support and look forward to hearing from you. Please phone Steve Craig (704-609-7098) or Terry Hill (704-847-4438) if you have any questions regarding the FORR program.

Steve Craig
Co-Chair Friends of Rocky River
RRTU President 1983-1984

Terry Hill
Co-Chair Friends of Rocky River
RRTU President 1990

Friends of Rocky River 2012 Pledge Card

Name: _____

Date: _____ Email address: _____

Amount: \$100 \$250 \$500 \$1,000 Other _____

Make checks payable to **Rocky River Trout Unlimited**. Mail your donation to:
Jonathan Miller, 2900 Winghaven Lane, Charlotte, NC 28210
If your employer has a matching gifts program, please include those forms too!